



Sremska 2, 76300 Bijeljina, Bosnia and Herzegovina

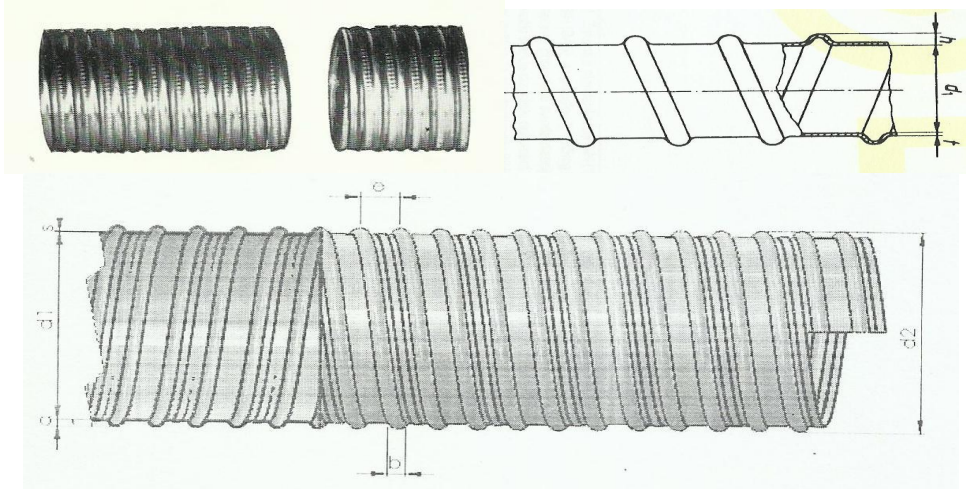
T/F: +387 55 244 600, Mob: +387 65 953 172, www.maflexdoo.com, e-mail: info@mafexdoo.com, bd@mafexdoo.com,

Metal flexible hose PREKATIP

IN ACCORDANCE WITH THE STANDARD DIN EN 523

DESCRIPTION:

Flexible metal strip wound limited leakproofness round transversal section, convoluted profile, by one side connected with two ribs.



LENGTHS:

The hoses and been manufacturing in standard lengths of 3, 4, 5, and 6 meter (tolerance ± 15 mm) and for making a using mutual connections by extension can be achieved required lengths.

As a especial construction of this type hose is one by name Prekatip with two robs. It is producing in diameters from 30 to 150 mm, and the most length in one piece without connection is 6 meter.

APPLICATION:

The hose has wide application in building industry such as: preloaded concrete, leaving of holes in concrete for cables, installation as well as emptiness's in neutral zones from the reason more light construction and save the material.

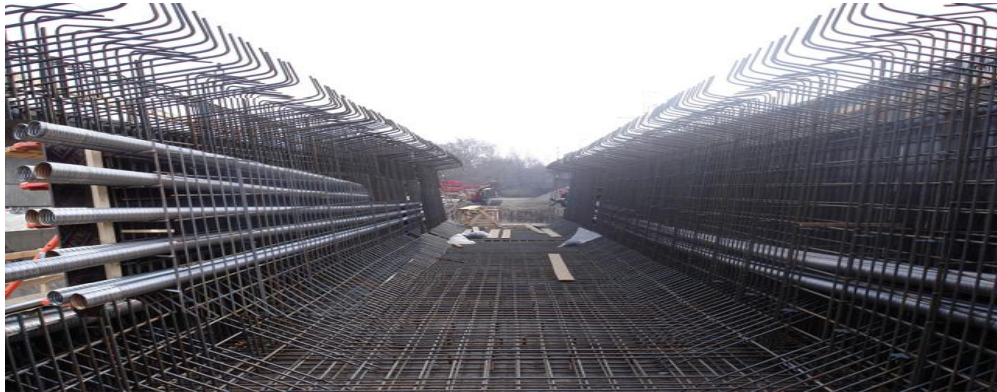


MATERIAL:

Steel cold rolled strips thickness DC01, EN 10139 / EN 10140

CHARACTERISTICS:

The hoses is light, with relative small flexibility on biggest lengths one to its own weight. It is possible to perform arches retaining achieved position, returning in prevision state caused hose deformation.



Diameter				Pitch		Profile height		Profile width	Wall thickness	Weight
Inside d1 (mm)	Tol	Outside d2(mm)	Tol	mm	Tol	mm	Tol	mm	mm	kg/m
40	± 0,7	45	± 0,7	14,0	± 0,5	2,5	± 0,3	5,0	0,25	0,540
44	± 0,7	49	± 0,7	14,0	± 0,5	2,5	± 0,3	5,0	0,25	0,590
50	± 0,7	55	± 0,7	14,0	± 0,5	2,5	± 0,3	5,0	0,30	0,660
55	± 0,7	60	± 0,7	14,0	± 0,5	2,5	± 0,3	5,0	0,30	0,700
60	± 0,7	65	± 0,7	14,0	± 0,5	2,5	± 0,3	5,0	0,30	0,750
65	± 0,7	70	± 0,7	14,0	± 0,5	3,0	± 0,3	5,0	0,35	0,800
70	± 0,7	76	± 0,7	14,0	± 0,5	3,0	± 0,3	5,0	0,35	0,850
75	± 0,7	81	± 0,7	14,0	± 0,5	3,0	± 0,3	5,0	0,35	0,900
80	± 0,7	86	± 0,7	14,0	± 0,5	3,0	± 0,3	5,0	0,35	0,950
85	± 0,8	91	± 0,8	14,0	± 0,5	3,0	± 0,3	5,0	0,35	1,000
90	± 0,8	96	± 0,8	14,0	± 0,5	3,0	± 0,3	5,0	0,40	1,080
95	± 0,9	101	± 0,9	14,0	± 0,5	3,0	± 0,3	5,0	0,40	1,150
100	± 0,9	106	± 0,9	14,0	± 0,5	3,0	± 0,3	5,0	0,40	1,200
105	± 1,0	111	± 1,0	14,0	± 0,5	3,0	± 0,3	5,0	0,40	1,270
110	± 1,0	116	± 1,0	14,0	± 0,5	3,0	± 0,3	5,0	0,40	1,340
115	± 1,0	121	± 1,0	14,0	± 0,5	3,0	± 0,3	5,0	0,40	1,400
120	± 1,0	126	± 1,0	14,0	± 0,5	3,0	± 0,3	5,0	0,40	1,460

